

# Cambridge *innovation* in numbers

## The Cambridge Cluster

There are currently...

**5,000+**

knowledge intensive firms



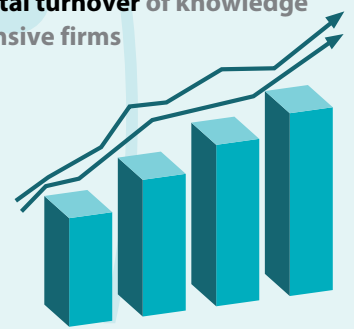
**61,000+**

people employed by knowledge intensive firms



**£15.5bn**

in total turnover of knowledge intensive firms



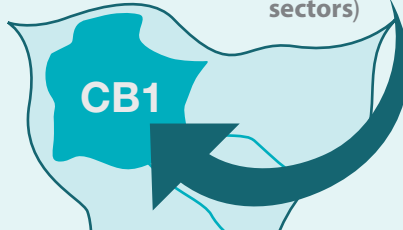
**3rd** most successful

University innovation ecosystem in the world

(MIT Skoltech Initiative Report, 2014)



**29%** of people work in the knowledge intensive sectors)



**316**



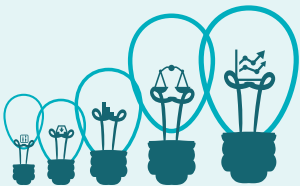
patent applications published per

**100,000** residents

Highest in the UK and more than the next two cities combined

**790+**

knowledge intensive services companies



**660+**

high-tech manufacturing companies



**440+**

life science services and healthcare companies



**3,100+**

information technology and communication companies



## The University

# 11,900+

people employed directly by the University



University expenditure of  
**£1,911m**



University income of  
**£1,965m**

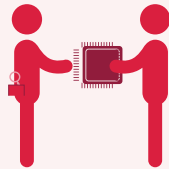
# 107

Cambridge affiliates have been awarded the Nobel Prize since 1904



# 1,800+

researchers supported by Cambridge Enterprise (the University's knowledge and technology transfer office) in academic year 2018



# 19,100+

students at the University of Cambridge



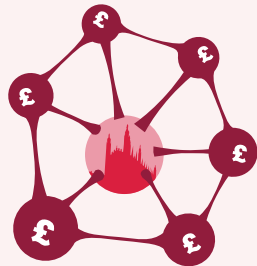
# 87%

of submissions deemed world leading or internationally excellent in research according to the 2014 Research Excellence Framework (REF)



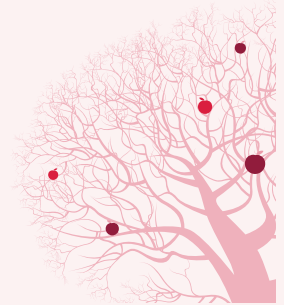
# £1.7bn

in follow-on funding raised by University of Cambridge spin-outs in the Cambridge Enterprise portfolio since 1995



# 97.4%

...the 5-year survival rate of Cambridge Enterprise portfolio companies\*



# £90.2m

The total for translational research funding won with the support of Cambridge Enterprise, 2011-18



# 260+

firms founded by Cambridge University Computer Lab alumni



# 89.9%

Cambridge recent leavers are in employment or full-time study, no matter the degree. A further 6.4% are travelling or not looking for work



This information has been collated from the MIT Skoltech Initiative Report (June 2014, 180/11/14), University of Cambridge Annual Report 2018, Research Excellence Framework 2014 (Results and Submissions), University of Cambridge Faculty of Computer Science and Technology Annual Report 2017-18, University of Cambridge Careers Service Annual Report 2017-18, \* companies incorporated in the 10-year period from 01.01.2004 – 31.12.2013 Cambridge Enterprise 2018, Cambridge Ahead Cluster Map (March 2019), the Centre for Cities Outlook (2019), University of Cambridge Facts and Figures (2019), [www.cam.ac.uk/research/research-at-cambridge/nobel-prize-winners](http://www.cam.ac.uk/research/research-at-cambridge/nobel-prize-winners).

Figures are based on information available at the time of printing – September 2019