

Cambridge *innovation* in numbers

The Cambridge Cluster

There are currently...

4,700+

knowledge intensive firms



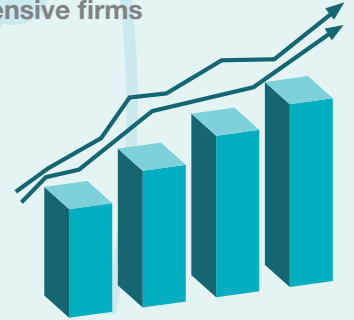
60,000+

people employed by knowledge intensive firms



£12bn+

in total turnover of knowledge intensive firms

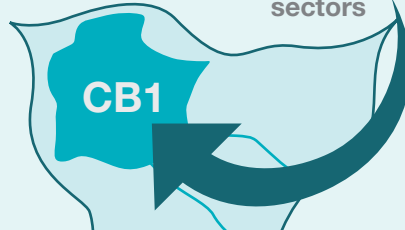


3rd most successful

University innovation ecosystem in the world (MIT Skoltech Initiative Report, 2014)



30% of people work in the knowledge intensive sectors



341.1  patent applications published per **100,000** residents

Highest in the UK and more than the next four cities combined

690+

knowledge intensive services companies



570+

high-tech manufacturing companies



430+

life science and healthcare companies



3000+

information technology and communication companies



The University

11,000+

people employed directly by the University



University expenditure of **£1,734m**



University income of **£1,799m**

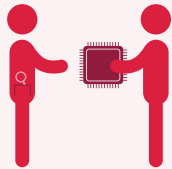
96

Cambridge affiliates have been awarded the Nobel Prize since 1904



1,600+

researchers supported by Cambridge Enterprise (the University's knowledge and technology transfer office)



18,900+

students at the University of Cambridge



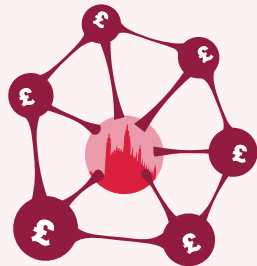
87%

of submissions deemed world leading or internationally excellent in research according to the 2014 Research Excellence Framework (REF)



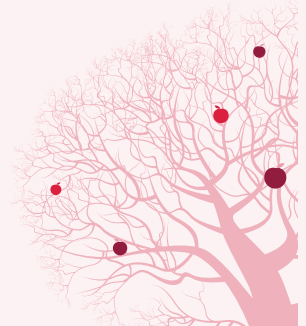
£1.5bn

follow-on funding raised by University of Cambridge spin-outs in the Cambridge Enterprise portfolio



64.6%

...the 5-year survival rate of Cambridge Enterprise investments (compared to 41.4% nationally)



£99.3m

in translational research funding won with the support of Cambridge Enterprise, 2011-16



250+

firms founded by Cambridge University Computer Lab alumni



90.5%

Cambridge recent leavers are in employment or full-time study, no matter the degree. A further 6.4% are travelling or not looking for work



This information has been collated from the MIT Skoltech Initiative Report (June 2014, 180/11/14), University of Cambridge Annual Report 2016, Research Excellence Framework 2014 (Results and Submissions), University of Cambridge Faculty of Computer Science and Technology Annual Report 2015-16, University of Cambridge Careers Service Annual Report 2016 (2015 data), Office of National Statistics Business Demography 2015, Cambridge Enterprise 2017, Cambridge Ahead Cluster Map (February 2017), the Centre for Cities Outlook (2017), University of Cambridge Facts and Figures (2017), www.cam.ac.uk/research/research-at-cambridge/nobel-prize-winners.

Figures are based on information available at the time of printing – July 2017



T +44 (0)1223 332300
E communications@admin.cam.ac.uk
W www.cam.ac.uk/research
f www.facebook.com/cambridge.university
t www.twitter.com/cambridge_uni
v www.youtube.com/cambridgeuniversity