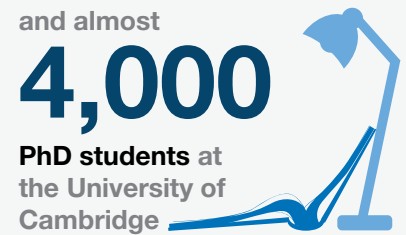
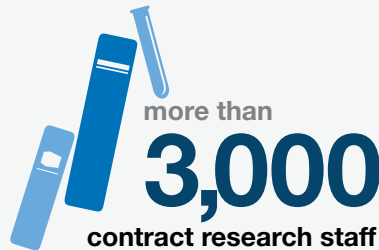


# Cambridge *research* in numbers

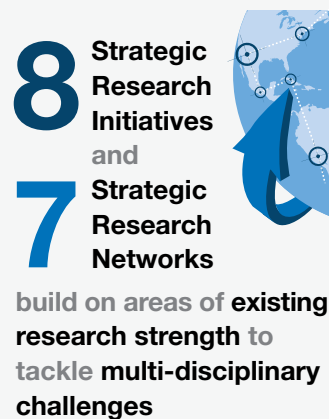
At Cambridge, we are committed to achieving excellence in research and scholarship, and to ensuring that our research contributes to the well-being of society. We provide a creative and supportive environment in which ideas are generated and can flourish. The following statistics give a flavour of the importance of research at Cambridge.

## The University

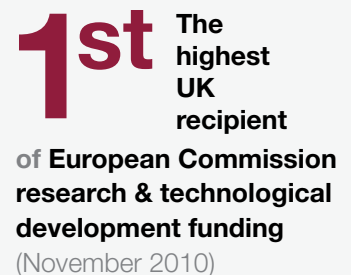
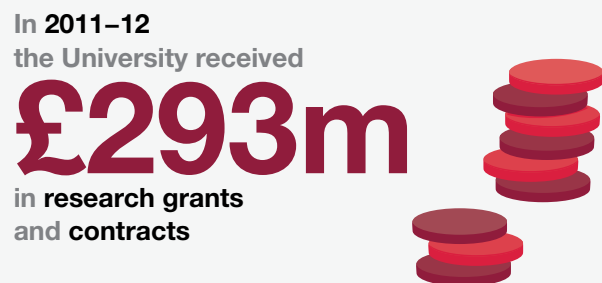
There are currently



The University's teaching and research is organised into six schools:  
**Arts and Humanities, Biological Sciences, Clinical Medicine,  
Humanities and Social Sciences, Physical Sciences, and Technology**



## Funding



## Partnership

The University works with

over **200** industrial partners  
and **700** UK and overseas organisations  
sponsor research at Cambridge



In 2012–13, as a result of its research, the University

...signed  
**95**  
licences



...filed  
**163**  
new patents



...and formed  
**5**  
companies



## Research in action

**1<sup>st</sup>** The University's overall ranking in the most recent (2008) Research Assessment Exercise, coming top in **19** research disciplines

Over **13.14** citations per FTE from publications published in 2011 on Scopus



In 2012 academics published **160** books and nearly **400** chapters and presented papers at over **500** conferences



Cambridge academics contribute to approximately



**12,000**  
publications  
each year

**23**



Cambridge academics were elected to the Fellowship of the Royal Society between 2010–13

**28**



Cambridge academics were elected to the Fellowship of the British Academy between 2010–13

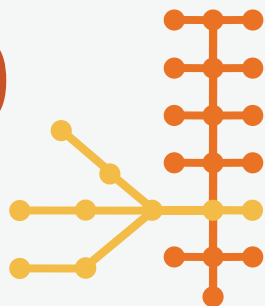
**89**



affiliates of the University of Cambridge have been awarded the Nobel Prize

## Public engagement with research

Around **35,000** people attend the **200** events at the Cambridge Science Festival each year



The Festival of Ideas attracts

**15,000** visitors to **200** events in **30** locations over 2 weeks



Figures are based on information available at the time of printing – September 2013