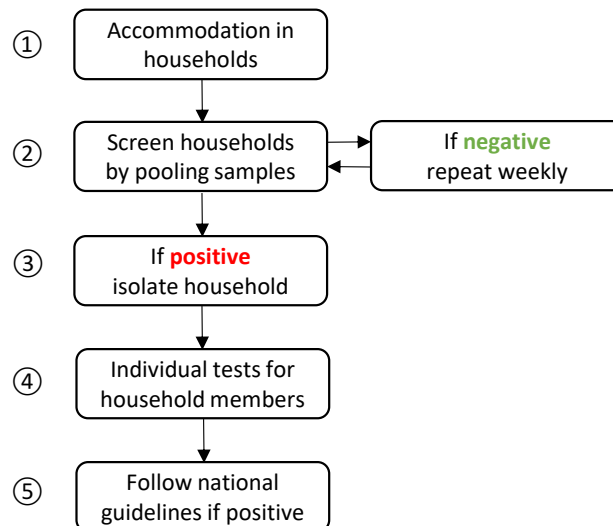




## Flow chart for the weekly asymptomatic screening programme for COVID-19



1. Students living in accommodation that includes high-contact shared facilities such as a bathroom, toilet or kitchen area are generally considered by Colleges to share the same *College household*. These shared areas provide opportunities for SARS-CoV-2 transmission, through contaminated surfaces or close contact with other household members. Like other households, College households therefore represent units of social distancing (and, if necessary, quarantine) in the University of Cambridge context.
2. The screening test is a self-administered swab from the nose and throat. Because we have a limited number of tests available, samples from several students will be tested together in *testing pools*. In general, testing pools will correspond to College households. Some smaller College households will be asked to join neighbouring College households in a single testing pool, while some larger College households will be split into smaller testing pools. To pool samples at the time they are collected, all the students in a given testing pool will place their swabs in the same sample tube. These pooled samples will be tested by PCR for SARS-CoV-2 at the Cambridge COVID-19 testing facility on the Cambridge Biomedical Campus.
3. If a pooled screening test is positive, students from the affected household or households will be informed within 24 hours. To prevent the onward transmission of COVID-19, they will be asked to follow University guidelines on household isolation, supported by their College.
4. Students from the affected household will be offered individual tests, to confirm the positive screening test result. This test will also be a self-administered swab from the nose and throat, but conducted under supervision at one of the University's established testing pods.
5. When an individual test is positive, a final plan for household isolation will be decided, in accordance with UK national guidelines. These test results will also trigger *NHS Test and Trace*.