

Cambridge *innovation* in numbers

The Cambridge Cluster

There are currently...

5,000+

knowledge intensive firms



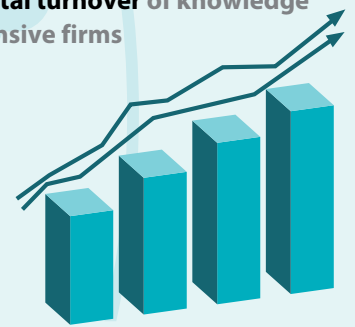
61,000+

people employed by knowledge intensive firms



£15.5bn

in total turnover of knowledge intensive firms



3rd

most successful

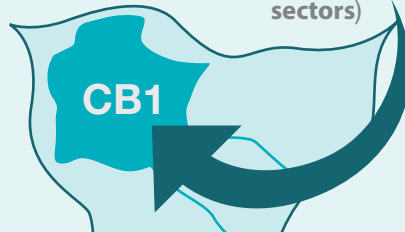
University innovation ecosystem in the world

(MIT Skoltech Initiative Report, 2014)



29%

of people work in the knowledge intensive sectors)



316

patent applications published per

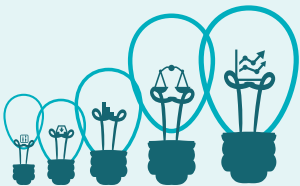
100,000 residents

Highest in the UK and more than the next two cities combined



790+

knowledge intensive services companies



660+

high-tech manufacturing companies



440+

life science services and healthcare companies



3,100+

information technology and communication companies



The University

11,900+

people employed directly by the University



University expenditure of **£1,911m**



University income of **£1,965m**

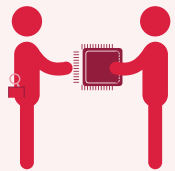
109

Cambridge affiliates have been awarded the Nobel Prize since 1904



1,800+

researchers supported by Cambridge Enterprise (the University's knowledge and technology transfer office) in academic year 2018



19,100+

students at the University of Cambridge



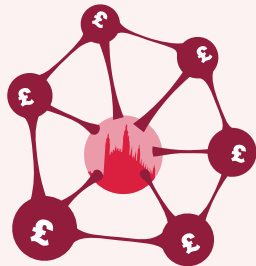
87%

of submissions deemed world leading or internationally excellent in research according to the 2014 Research Excellence Framework (REF)



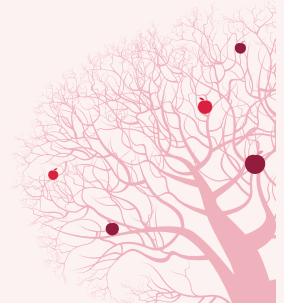
£1.7bn

in follow-on funding raised by University of Cambridge spin-outs in the Cambridge Enterprise portfolio since 1995



97.4%

...the 5-year survival rate of Cambridge Enterprise portfolio companies*



£90.2m

The total for translational research funding won with the support of Cambridge Enterprise, 2011-18



260+

firms founded by Cambridge University Computer Lab alumni



89.9%

Cambridge recent leavers are in employment or full-time study, no matter the degree. A further 6.4% are travelling or not looking for work



This information has been collated from the MIT Skoltech Initiative Report (June 2014, 180/11/14), University of Cambridge Annual Report 2018, Research Excellence Framework 2014 (Results and Submissions), University of Cambridge Faculty of Computer Science and Technology Annual Report 2017-18, University of Cambridge Careers Service Annual Report 2017-18, * companies incorporated in the 10-year period from 01.01.2004 – 31.12.2013 Cambridge Enterprise 2018, Cambridge Ahead Cluster Map (March 2019), the Centre for Cities Outlook (2019), University of Cambridge Facts and Figures (2019), www.cam.ac.uk/research/research-at-cambridge/nobel-prize-winners.

Figures are based on information available at the time of printing – October 2019