

# Cambridge *innovation* in numbers

## The Cambridge Cluster

There are currently...

**4,700+**

knowledge intensive firms



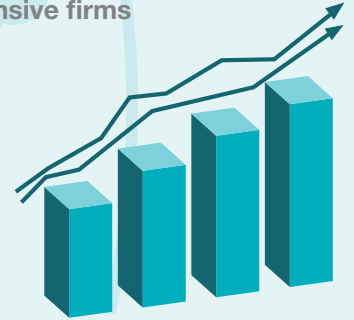
**61,100+**

people employed by knowledge intensive firms



**£12.3bn**

in total turnover of knowledge intensive firms

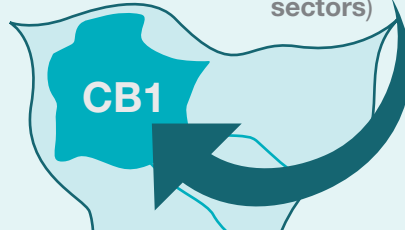


**3rd** most successful

University innovation ecosystem in the world (MIT Skoltech Initiative Report, 2014)



**29%** of people work in the knowledge intensive sectors)

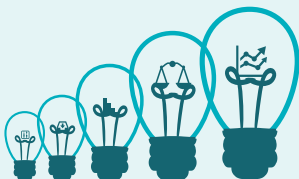


**341.1**  patent applications published per **100,000** residents

Highest in the UK and more than the next four cities combined

**690+**

knowledge intensive services companies



**560+**

high-tech manufacturing companies



**420+**

life science and healthcare companies



**3000+**

information technology and communication companies



## The University

# 11,500+

people employed directly by the University



University expenditure of **£1,807m**



University income of **£1,870m**

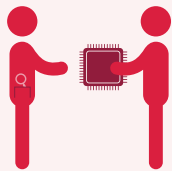
# 96

Cambridge affiliates have been awarded the Nobel Prize since 1904



# 1,700+

researchers supported by Cambridge Enterprise (the University's knowledge and technology transfer office)



# 19,200+

students at the University of Cambridge



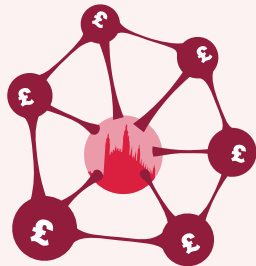
# 87%

of submissions deemed world leading or internationally excellent in research according to the 2014 Research Excellence Framework (REF)



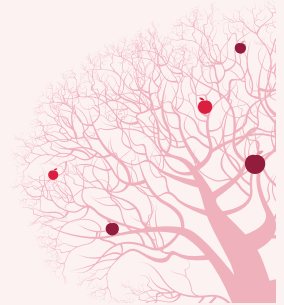
# £1.6bn

in follow-on funding raised by University of Cambridge spin-outs in the Cambridge Enterprise portfolio since 1995



# 97.5%

...the 5-year survival rate of Cambridge Enterprise portfolio companies\*



# £112.3m

in translational research funding won with the support of Cambridge Enterprise, 2011-17



# 260+

firms founded by Cambridge University Computer Lab alumni



# 91.1%

Cambridge recent leavers are in employment or full-time study, no matter the degree. A further 5.43% are travelling or not looking for work



This information has been collated from the MIT Skoltech Initiative Report (June 2014, 180/11/14), University of Cambridge Annual Report 2017, Research Excellence Framework 2014 (Results and Submissions), University of Cambridge Faculty of Computer Science and Technology Annual Report 2016-17, University of Cambridge Careers Service Annual Report 2016 (2015 data), \* companies incorporated in the 10-year period from 01.01.2003 – 31.12.2012, Cambridge Enterprise 2018, Cambridge Ahead Cluster Map (January 2018), the Centre for Cities Outlook (2018), University of Cambridge Facts and Figures (2018), [www.cam.ac.uk/research/research-at-cambridge/nobel-prize-winners](http://www.cam.ac.uk/research/research-at-cambridge/nobel-prize-winners).

Figures are based on information available at the time of printing – January 2018