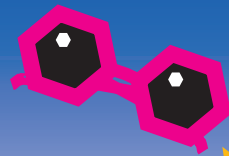




# SUMMER at the MUSEUMS

**EVENTS CALENDAR 2011**  
[www.cam.ac.uk/museums/summer](http://www.cam.ac.uk/museums/summer)



Enter the  
**Draw What You Saw**  
Competition  
every time you  
visit!

## Friday 22nd July

- **BioBlitz** 24 hour biodiversity survey with bookable activity programme; includes bird spotting, bat walks, plant surveying, moth trapping, pond dipping, mini beast hunts with experts from Zoology Museum. *Cambridge University Botanic Garden, 5pm onwards, free. Pre-book*

## Saturday 23rd July

- **Talking Treasures** Discover the amazing stories hidden in objects from Cambridge Museum collections. Live storytelling, story-making, hands on activities. *Fitzwilliam Museum, 12.00 – 16.00, all ages, free. Drop-in*
- **BioBlitz** 24 hour biodiversity survey with bookable activity programme; includes bird spotting, bat walks, plant surveying, moth trapping, pond dipping, mini beast hunts with experts from Zoology Museum. *Cambridge University Botanic Garden, ends 5pm, free. Pre-book*

## Tuesday 26th July

- **Cool Club** Weekly holiday club with different activity each week, including meeting polar experts. *The Polar Museum, 10.30 – 12.00, ages 7-11, £6 per session. Pre-book*

## Wednesday 27th July

- **Pop-up Pocket Money Shop** Try shopping in the past; weigh sweets, package your purchases using old money & measures. Education room. *Cambridge and County Folk Museum, 10.30 – 17.00, all ages, free. Drop-in*
- **Sewing Stories** Family storytelling and stitching events linked to exhibition *Sewing our Traditions: 'Dolls of the Canadian North'*. *The Polar Museum, see website for details, all ages, free. Pre-book*

## Thursday 28th July

- **Archaeology Day** Sand tray digs and experts on hand to help identify your own finds as part of national archaeology week. *Farmland Museum, 12.00 – 16.00, ages 5+, admission charges apply. Drop-in*

## Saturday, 30th July

- **Buried Treasures** Explore the glittering finds of our area & create your own treasure to bury at home. *Fitzwilliam Museum, 10.30 – 12.30, ages 5+, £5 per child. Pre-book*

## Sunday 31st July

- **Classic & Vintage Bus Day** See buses & coaches from the 1950s, 60s & 70s. Free bus service to and from city centre. Build a 'balloon-bus' and race it. *Cambridge Museum of Technology, 11.00 – 17.00, all ages, admission charges apply. Drop-in*

## Monday 1st August

- **Cabinets of Curiosity** Museum of Archaeology & Anthropology's 'Cabinet of Curiosity' is visiting the Whipple Museum. Join in with hands-on activities. *Whipple Museum of the History of Science, 12.30 – 16.30, all ages, free. Drop-in*

## Tuesday 2nd August

- **Drop-in at Kettle's Yard** Be creative in the education room; art materials & help supplied. *Kettle's Yard, 13.00 – 16.00, all ages, free. Drop-in*
- **Cool Club** Weekly holiday club with different activity each week, including meeting polar experts. *The Polar Museum, 10.30 – 12.00, ages 7-11, £6 per session. Pre-book*

## Wednesday 3rd August

- **Drawing Together** Drop in and draw at the Museum. Activities available from Fitz Family welcome point. *Fitzwilliam Museum, 12.00 – 16.00, all ages, free. Drop-in*
- **Drop-in at Kettle's Yard** Be creative in the education room; art materials & help supplied. *Kettle's Yard, 13.00 – 16.00, all ages, free. Drop-in*
- **Summer evening in the Garden** Evening tours and classical music cushion concert. *Cambridge University Botanic Garden, garden open until 8pm, all ages, normal entry fees apply. Drop-in*

- **Family Rocket Morning** Build a launch pad and rocket and fire into the sky. Can you fire your rocket higher than our chimney? *Cambridge Museum of Technology 10.00 – 12.30pm, ages 9+, adults £3, children £1.50. Pre-book*

- **Sedgwick Storytelling** Stories celebrating all things marine and reptilian to mark the 200th anniversary of Mary Anning's first fossil ichthyosaur find. *Sedgwick Museum, 10.15-11.45; 14.30-16.00, ages 6 – 11, £2 per child. Pre-book*

- **Pop-up Pocket Money Shop** Try shopping in the past; weigh sweets, package your purchases using old money & measures. Education room. *Cambridge and County Folk Museum, 10.30 – 17.00, all ages, free. Drop-in*

- **Sewing Stories** Family Storytelling and stitching events linked to exhibition *Sewing our Traditions: 'Dolls of the Canadian North'*. *The Polar Museum, see website for details, all ages, free. Pre-book*

## Thursday 4th August

- **Flower Power** Summer festival in celebration of flowers, learn why flowers smell, create flower potions and footprint flowers. *Cambridge University Botanic Garden, 11.00 – 15.00, ages 3-16, £2 per child (adult Garden entry fees apply). Drop-in*
- **Drop-in at Kettle's Yard** Be creative in the education room; art materials & help supplied. *Kettle's Yard, 13.00 – 16.00, all ages, free. Drop-in*
- **Clay Extravaganza** Come and make something with clay, from sausages to sculptural masterpieces! *Farmland Museum at Denny Abbey, 12.00 – 16.00, ages 5+, activities included in entry fee. Drop-in*

## Friday 5th August

- **Flower Power** Summer festival in celebration of flowers, learn why flowers smell, create flower potions and footprint flowers. *Cambridge University Botanic Garden, 11.00 – 15.00, ages 3-16, £2 per child (adult Garden entry fees apply). Drop-in*
- **Drop-in at Kettle's Yard** Be creative in the education room; art materials & help supplied. *Kettle's Yard, 13.00 – 16.00, all ages, free. Drop-in*
- **Sedgwick Storytelling** Stories celebrating all things marine and reptilian to mark the 200th anniversary of Mary Anning's first fossil ichthyosaur find. *Sedgwick Museum, 10.00-11.00; 11.30-12.30, ages 6 and under, £2 per child. Pre-book*

## Saturday 6th August

- **Flower Power** Summer festival in celebration of flowers, learn why flowers smell, create flower potions and footprint flowers. *Cambridge University Botanic Garden 11.00 – 15.00, Ages 3-16, £2 per child (adult Garden entry fees apply). Drop-in*
- **Family First Saturday** Pick up drawing materials, activities and trails from the Fitz Family Welcome Point. *Fitzwilliam Museum, 14.00 – 16.00, all ages, free. Drop-in*

## Sunday 7th August

- **Flower Power** Summer festival in celebration of flowers, learn why flowers smell, create flower potions and footprint flowers. *Cambridge University Botanic Garden 11.00 – 15.00, ages 3-16, £2 per child (adult Garden entry fees apply). Drop-in*

**Don't miss this fab stuff too:**

- 'Draw What You Saw' postcard competition. Entry forms available at all participating museums.

- Free trails, backpacks, explorer kits and hands on activities available everyday, including:

**Fitz Kits** (*Fitzwilliam*)  
**Animal Explorer Packs** (*Zoology*)  
**Young Explorer Backpacks** (*CUBG*)  
**Gallery Play Box** (*Classical Archaeology*)  
**Discovery Boxes** (*Sedgwick*)  
**Activity Table** (*Polar Museum*)  
**Victorian Parlour** (*Whipple*)

## Museum contact details:

Please check the full event details on the websites for each venue. Booking is required for all 'pre-book' events. All children must be accompanied by an adult.

**Museum of Classical Archaeology** 01223 335153  
[www.classics.cam.ac.uk/museum](http://www.classics.cam.ac.uk/museum)

**Cambridge University Botanic Garden** 01223 336265  
[www.botanic.cam.ac.uk](http://www.botanic.cam.ac.uk)

**Fitzwilliam Museum** 01223 332900  
[www.fitzmuseum.cam.ac.uk](http://www.fitzmuseum.cam.ac.uk)

**Kettle's Yard** 01223 748100  
[www.kettlesyard.co.uk](http://www.kettlesyard.co.uk)

**Cambridge and County Folk Museum** 01223 355159  
[www.folkmuseum.org.uk](http://www.folkmuseum.org.uk)

**The Polar Museum** 01223 336540  
[www.spri.cam.ac.uk/museum](http://www.spri.cam.ac.uk/museum)

**Sedgwick Museum of Earth Sciences** 01223 333456  
[www.sedgwickmuseum.org](http://www.sedgwickmuseum.org)

**Whipple Museum of the History of Science** 01223 330906  
[www.hps.cam.ac.uk/whipple](http://www.hps.cam.ac.uk/whipple)

**Museum of Zoology** 01223 336650  
[www.museum.zoo.cam.ac.uk](http://www.museum.zoo.cam.ac.uk)

**Cambridge Technology Museum**  
[info@museumoftechnology.com](mailto:info@museumoftechnology.com)  
[www.museumoftechnology.com](http://www.museumoftechnology.com)

**Farmland Museum and Denny Abbey** 01223 860988  
[www.dennyfarmlandmuseum.org.uk](http://www.dennyfarmlandmuseum.org.uk)

### Monday 8th August

- **Cabinets of Curiosity** Museum of Archaeology & Anthropology's 'Cabinet of Curiosity' is visiting the Whipple Museum. Join in with hands-on activities. *Whipple Museum of the History of Science, 12.30 – 16.30, all ages, free. Drop-in*
- **Sedgwick Storytelling** Stories celebrating all things marine and reptilian, to mark 200th anniversary of Mary Anning's first fossil ichthyosaur find. *Sedgwick Museum, 10.15 – 11.45; 14.30 – 16.00, ages 6 to 11, £2 per child. Pre-book*

### Tuesday 9th August

- **Drop-in at Kettle's Yard** Be creative in the education room; art materials & help supplied. *Kettle's Yard, 13.00 – 16.00, all ages, free. Drop-in*
- **Cool Club** Weekly holiday club with different activity each week, including meeting polar experts. *The Polar Museum, 10.30 – 12.00, ages 7-11, £6 per session. Pre-book*
- **Tales for a Summer's evening** Performance of Tales from Ovid's Metamorphoses, weird and wonderful tales of gods and goddesses and other strange beings with professional storyteller, Anne French. *Museum of Classical Archaeology, arrive 7.30 for 8pm start, adults and children aged 14+, free. Pre-book*

### Wednesday 10th August

- **Drop-in at Kettle's Yard** Be creative in the education room; art materials & help supplied. *Kettle's Yard, 13.00 – 16.00, all ages, free. Drop-in*
- **Family Rocket Morning** Build a launch pad and rocket and fire into the sky. Can you fire your rocket higher than our chimney? *Cambridge Museum of Technology 10.00 – 12.30pm, ages 9+, adults £3, children £1.50. Pre-book*
- **Pop-up Pocket Money Shop** Try shopping in the past; weigh sweets, package your purchases using old money & measures. Education room. *Cambridge and County Folk Museum, 10.30 – 17.00, all ages, free. Drop-in*
- **Create-a-Creature** Hear fantastic stories of myths and monsters and make your very own fabulous creature or monster to take home. *Museum of Classical Archaeology, 10.30-12.00, ages 5+, free. Pre-book*
- **Sewing Stories** Family storytelling and stitching events linked to exhibition Sewing our Traditions: 'Dolls of the Canadian North'. *The Polar Museum, see website for details, all ages, free. Pre-book*

### Thursday 11th August

- **Drop-in at Kettle's Yard** Be creative in the education room; art materials & help supplied. *Kettle's Yard, 13.00 – 16.00, all ages, free. Drop-in*
- **Lovely Ladybirds** Celebrate ladybirds! Join us for a ladybird hunt, design a ladybird hotel or make a ladybird artwork. *Farmland Museum at Denny Abbey, 12.00 – 16.00, ages 5+, activities included in entry fee. Drop-in*

### Friday 12th August

- **Drop-in at Kettle's Yard** Be creative in the education room; art materials & help supplied. *Kettle's Yard, 13.00 – 16.00, all ages, free. Drop-in*

### Monday 15th August

- **Drop-in at Kettle's Yard** Be creative in the education room; art materials & help supplied. *Kettle's Yard, 13.00 – 16.00, all ages, free. Drop-in*

### Tuesday 16th August

- **Drop-in at Kettle's Yard** Be creative in the education room; art materials & help supplied. *Kettle's Yard, 13.00 – 16.00, all ages, free. Drop-in*
- **Sedgwick Storytelling** Stories celebrating all things marine and reptilian, to mark 200th anniversary of Mary Anning's first fossil ichthyosaur find. *Sedgwick Museum, 10.00 – 11.00; 11.30 – 12.30, ages 6 and under, £2 per child. Pre-book*
- **Cool Club** Weekly holiday club with different activity each week, including meeting polar experts. *The Polar Museum, 10.30 – 12.00, ages 7-11, £6 per session. Pre-book*

### Wednesday 17th August

- **Drawing Together** Drop in and draw at the Museum. Activities available from Fitz Family welcome point. *Fitzwilliam Museum, 12.00 – 16.00, all ages, free. Drop-in*
- **Drop-in at Kettle's Yard** Be creative in the education room; art materials & help supplied. *Kettle's Yard, 13.00 – 16.00, all ages, free. Drop-in*
- **Summer evening in the Garden** Evening tours, picnics welcome, cafe open. *Cambridge University Botanic Garden, Garden open until 8pm, all ages, normal entry fees apply. Drop-in*
- **Family Rocket Morning** Build a launch pad and rocket and fire into the sky. Can you fire your rocket higher than our chimney? *Cambridge Museum of Technology 10.00 – 12.30pm, ages 9+, adults £3, children £1.50. Pre-book*
- **Pop-up Pocket Money Shop** Try shopping in the past; weigh sweets, package your purchases using old money & measures. Education room. *Cambridge and County Folk Museum, 10.30 – 17.00, all ages, free. Drop-in*
- **Sewing Stories** Family storytelling and stitching events linked to exhibition Sewing our Traditions: 'Dolls of the Canadian North'. *The Polar Museum, see website for details, all ages, free. Pre-book*

### Thursday 18th August

- **Drop-in at Kettle's Yard** Be creative in the education room; art materials & help supplied. *Kettle's Yard, 13.00 – 16.00, all ages, free. Drop-in*
- **Pirates and Buccaneers** Join the crew for some pirate adventures. Dress up or make essential kit here, and follow the clues to find the treasure. *Farmland Museum at Denny Abbey, 12.00 – 16.00, ages 5+, activities included in entry fee. Drop-in*

### Friday 19th August

- **Drop-in at Kettle's Yard** Be creative in the education room; art materials & help supplied. *Kettle's Yard, 13.00 – 16.00, all ages, free. Drop-in*

### Tuesday 23rd August

- **Drop-in at Kettle's Yard** Be creative in the education room; art materials & help supplied. *Kettle's Yard, 13.00 – 16.00, all ages, free. Drop-in*
- **Cool Club** Weekly holiday club with different activity each week, including meeting polar experts. *The Polar Museum, 10.30 – 12.00, Ages 7-11, £6 per session, Pre-book*

### Wednesday 24th August

- **Drop-in at Kettle's Yard** Be creative in the education room; art materials & help supplied. *Kettle's Yard, 13.00 – 16.00, all ages, free. Drop-in*
- **Pop-up Pocket Money Shop** Try shopping in the past; weigh sweets, package your purchases using old money & measures. Education room. *Cambridge and County Folk Museum, 10.30 – 17.00, all ages, free. Drop-in*

### Thursday 25th August

- **Curious Collections** See the glittering collections of powerful people & make a curious keepsake to take home. *Fitzwilliam Museum, 10.30 – 12.30, age 5+, £5. Pre-book*
- **Drop-in at Kettle's Yard** Be creative in the education room; art materials & help supplied. *Kettle's Yard, 13.00 – 16.00, all ages, free. Drop-in*
- **My Museum** Make your own show case for our Museum mural by drawing or making objects from our collections. *Farmland Museum at Denny Abbey, 12.00 - 16.00, ages 5+, activities included in entry fee. Drop-in*

### Friday 26th August

- **Drop-in at Kettle's Yard** Be creative in the education room; art materials & help supplied. *Kettle's Yard, 13.00 – 16.00, all ages, free. Drop-in*

### Saturday 27th August

- **Bank Holiday Steaming** The museum celebrates the late August bank holiday by stoking up the boiler and bringing the engines back to life. *Cambridge Museum of Technology, 11.00 – 17.00, all ages, museum entry fees apply. Drop-in*

### Sunday 28th August

- **Bank Holiday Steaming** (as info above on 27th)

### Monday 29th August

- **Drop-in at Kettle's Yard** Be creative in the education room; art materials & help supplied. *Kettle's Yard, 13.00 – 16.00, all ages, free. Drop-in*
- **Medieval Life and Times** Take a step back in time to find out all about medieval life. Enjoy archery, cookery and combat demonstrations. *Farmland Museum at Denny Abbey, 10.30 – 17.00, all ages, activities included in entry fee. Drop-in*

### Tuesday 30th August

- **Drop-in at Kettle's Yard** Be creative in the education room; art materials & help supplied. *Kettle's Yard, 13.00 – 16.00, all ages, free. Drop-in*
- **Medieval Life and Times** Take a step back in time to find out all about medieval life. Enjoy archery, cookery and combat demonstrations. *Farmland Museum at Denny Abbey, 10.30 – 17.00, all ages, activities included in entry fee. Drop-in*
- **Cool Club** Weekly holiday club with different activity each week, including meeting polar experts. *The Polar Museum, 10.30 – 12.00, ages 7-11, £6 per session. Pre-book*

### Wednesday 31st August

- **Drawing Together** Drop in and draw at the Museum. Activities available from Fitz Family welcome point. *Fitzwilliam Museum, 12.00 – 16.00, all ages, free. Drop-in*
- **Drop-in at Kettle's Yard** Be creative in the education room; art materials & help supplied. *Kettle's Yard, 13.00 – 16.00, all ages, free. Drop-in*
- **Pop-up Pocket Money Shop** Try shopping in the past; weigh sweets, package your purchases using old money & measures. Education room. *Cambridge and County Folk Museum, 10.30 – 17.00, all ages, free. Drop-in*

### Thursday 1st September

- **Time Detectives** Investigate the history of Denny through the people who lived here, dress up in replica costumes and make objects that they would have used. *Farmland Museum at Denny Abbey, 12.00 – 16.00, age 5+, activities included in entry fee. Drop-in*

### Saturday 3rd September

- **Plant Propagation** First Saturday family session on how to make plants for free, take your own mini plant home. *Cambridge University Botanic Garden 11.00 – 15.00, ages 3-16, £2 per child (adult Garden entry fees apply). Drop-in*
- **Family First Saturday** Pick up drawing materials, activities and trails from the Fitz Family Welcome Point. *Fitzwilliam Museum, 14.00 – 16.00, All Ages, Free, Drop-in*

Page 2 of 2



# SUMMER at the MUSEUMS

[www.cam.ac.uk/museums/summer](http://www.cam.ac.uk/museums/summer)